



RS-1000 ZOOM PHOTO SLIT LMAP

RS-1000

RIGHTmed



ZOOM, PROGRAM AND BROAD IMAGING CAPABILITIES

THE RS-1000 SLIT LAMP

Zoom Optics

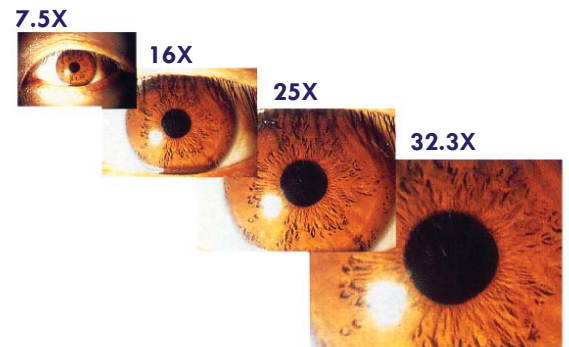
Thanks to RIGHTmedical's superb zoom optics, there are no more blackouts with magnification adjustments, a plus when it comes to imaging. Its broad zoom ratio covers 7.5x to 32.3x with five intermediary click stops at 7.5x, 10x, 16x, 25x, 30x and 32.3x. Magnification can be enlarged from 12x to 51.6x with an optional 20x eyepiece.

State-of-the-Art Slit Lamp Optics and Mechanism

The RS-1000 slit lamp provides bright images with a continuously adjustable 14mm slit width. Lengths are preset from 0.2mm pinpoint to 14mm segments and are continuously variable from 1mm to 12mm. A boost switch gives maximum illumination when activated.

Superb Photo Optics

The RS-1000 features a stereoscopic zoom microscope with parallel optics for observing stereo images. Extra low dispersion glass guarantees high resolution, and high contrast pictures. The quick-return mirror system sends 100% of the light to the camera back for optimal photographic results and maximum patient comfort.



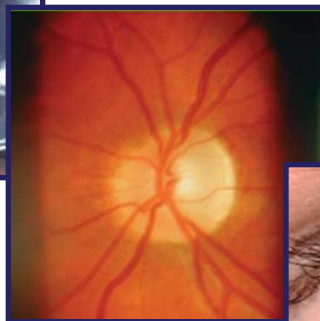
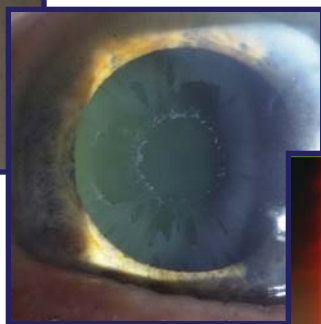
THE RS-1000 SLIT LAMP

Programmable Flash Device for Optimal Imaging

The RS-1000's integrated flash device has a variety of pre-programmed flash levels that correspond to the flash intensity required for perfect imaging of various ocular regions. The flash device also includes a series of icon driven reminders that instruct the photographer for the need for diffusers, accessory lenses, diffuse illumination and for the positioning of the slit. The device also monitors the exposure level and automatically controls it when zoom magnification is changed.

Background Illumination (Optional)

Two types of background illumination are now available; one for digital photography and one for video. Slit images and backgrounds can now be seen at the same time for anterior segments. Includes three-step intensity changer for digital camera and video. Both fibers can be attached simultaneously.



RS-1000 ZOOM SLIT LAMP

SPECIFICATIONS			
Microscope			
Type	Stereoscopic zoom microscope with parallel optics		
Magnification	Variable via continuous zooming (zoom ratio 4.3x)		
Objective Magnification	0.6x to 2.58x		
Conversion Angle	13.2°		
Eyepiece Magnification	12.5x (standard), 20x (option)		
Total Magnification	Objective	12.5x Eyepiece	20x Eyepiece
	0.6x	7.5x	12x
	1.24x	15.6x	24.8x
	2.58x	32.3x	51.6x
Illumination System			
Light Source	12V-30W halogen lamp		
Slit Projection Magnification	1x		
Slit Width	0 to 14mm continuously variable		
Slit Rotation Angle	90° each right and left		
Slit Length	0, 0.2, 1, 2, 5, 10, 14, 1 to 12mm continuously variable		
Slit Vertical Angle	0°, 5°, 10°, 15°, 20°		
Halogen Lamp Voltage	5 to 12V, 12.5V (boost)		
Arm Unit			
Rotation Angle	90° each right and left		
Cross Slide Table			
Movement Range	100 x 110mm (forward/back x left/right); 65mm toward operator from chin rest support center, 30mm toward patient, 70mm toward operator, 55mm to the right and left		
Dimensions			
Table Top to Patient Eye	375mm		
Reaching Distance	287mm (without photo equipment - 335mm with 35mm camera)		
Microscope W.D.	100.4mm		
Distance from Table Top to Optical Axis	399mm		

Distributed by:

RIGHTmed

5325 Cleveland Street, Suite 303
Virginia Beach, VA 23462

888-224-6012 | www.rightmedical.com